

# SST TERMINAL BOX

IP-304-T090909

304 STAINLESS STEEL | IP66, IP67

90H x 90W x 90D

The IP Enclosures SST Range of grade 304 stainless steel terminal boxes are designed for use in the most demanding industrial environments.

**Protection:** Complies with IP66, IP67, NEMA 4x

**Standard:**    N° file E534557

**Material:**

- Body: 1.0mm. AISI 304 (Wnr 1.4301) Scotch-brite
- Door: 1.0mm. AISI 304 (Wnr 1.4301) Scotch-brite
- Seal: Silicone

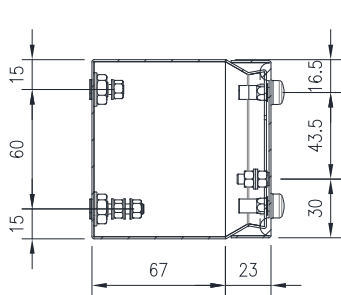
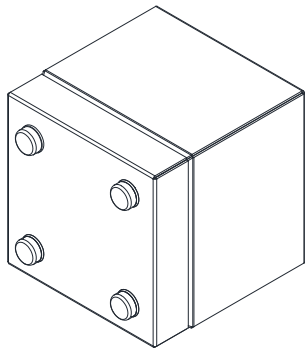
**Surface Finish:**

- 0.2 micron Ra surface Scotch-brite finish.

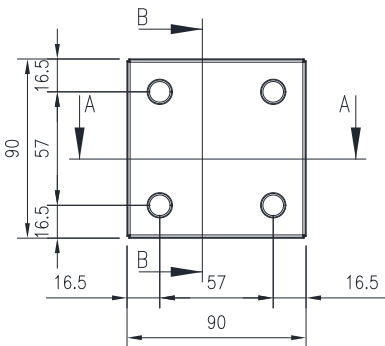
**Body:** The robust body is fabricated using 1.0mm AISI 304 (Wnr 1.4301) Stainless Steel, scotched-brite finish and incorporates a high quality Silicone seal.

**Lid/Door:** The robust pre-drilled detachable blind lid/door is fabricated using 1.0mm AISI 304 (Wnr 1.4301) Stainless Steel, scotched-brite finish. The door closing system is done through fastening of M5 screws. The rear part of the door is fastened using M5 bushes.

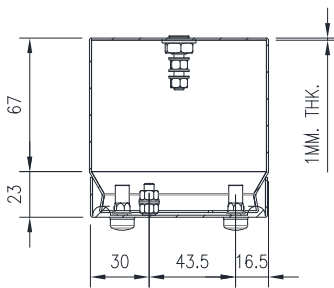
**Seal:** Silicone.



SECTION B-B



FRONT VIEW



SECTION A-A